



Ministerul Educației  
Universitatea de Medicină și Farmacie din Craiova  
Facultatea de Medicină  
Concurs de admitere Biologie - Fizică  
Sesiunea iulie 2022

Indicații de completare:

1. Pentru completarea grilei folosiți numai pix cu pastă neagră.
2. Pentru fiecare întrebare vi se oferă 5 opțiuni de răspuns (a, b, c, d și e). Marcarea răspunsului corect se face prin umplerea completă a cerculețului. Orice alt mod de marcare va determina anularea răspunsului la întrebarea respectivă.

Exemple de marcare: corectă: ○ ● ○ ● ○  
Incorectă: ○ ✗ ○ ● ○      incorectă: ○ ✗ ○ ✗ ○

3. Nu marcați cerculețele din cele 2 rânduri care specifică tipul de teză.
4. În caz de marcare greșită puteți solicita responsabilului de sală un nou formular grilă de același tip o singură dată.

Deoarece citirea formularului grilă și transformarea punctajului în note se face automat, cu ajutorul calculatorului, trebuie să respectați cu strictețe aceste precizări.

Numele:.....

Inițiala tatălui:.....

Prenumele:.....

Număr legitimație:.....

Program studii:.....

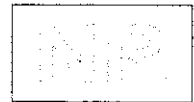
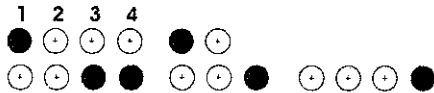
Candidat,

(semnătura)

Responsabil sală,

(semnătura)

Tip teză: **1**



	a	b	c	d	e
1	○	●	○	○	○
2	○	●	○	○	○
3	○	○	○	○	○
4	○	○	○	○	○
5	○	○	○	○	○
6	○	○	○	○	○
7	○	○	○	○	○
8	○	○	○	○	○
9	○	○	○	○	○
10	○	○	○	○	○
11	○	○	○	○	○
12	○	○	○	○	○

	a	b	c	d	e
13	○	○	○	○	○
14	○	○	○	○	○
15	○	○	○	○	○
16	○	○	○	○	○
17	○	○	○	○	○
18	○	○	○	○	○
19	○	○	○	○	○
20	○	○	○	○	○
21	○	○	○	○	○
22	○	○	○	○	○
23	○	○	○	○	○
24	○	○	○	○	○

	a	b	c	d	e
25	○	○	○	○	○
26	○	○	○	○	○
27	○	○	○	○	○
28	○	○	○	○	○
29	○	○	○	○	○
30	○	○	○	○	○
31	○	○	○	○	○
32	○	○	○	○	○
33	○	○	○	○	○
34	○	○	○	○	○
35	○	○	○	○	○
36	○	○	○	○	○

	a	b	c	d	e
37	○	○	○	○	○
38	○	○	○	○	○
39	○	○	○	○	○
40	○	○	○	○	○
41	○	○	○	○	○
42	○	○	○	○	○
43	○	○	○	○	○
44	○	○	○	○	○
45	○	○	○	○	○
46	○	○	○	○	○
47	○	○	○	○	○
48	○	○	○	○	○

	a	b	c	d	e
49	○	○	○	○	○
50	○	○	○	○	○
51	○	○	○	○	○
52	○	○	○	○	○
53	○	○	○	○	○
54	○	○	○	○	○
55	○	○	○	○	○
56	○	○	○	○	○
57	○	○	○	○	○
58	○	○	○	○	○
59	○	○	○	○	○
60	○	○	○	○	○

	a	b	c	d	e
61	○	○	○	○	○
62	○	○	○	○	○
63	○	○	○	○	○
64	○	○	○	○	○
65	○	○	○	○	○
66	○	○	○	○	○
67	○	○	○	○	○
68	○	○	○	○	○
69	○	○	○	○	○
70	○	○	○	○	○
71	○	○	○	○	○
72	○	○	○	○	○

	a	b	c	d	e
73	○	○	○	○	○
74	○	○	○	○	○
75	○	○	○	○	○
76	○	○	○	○	○
77	○	○	○	○	○
78	○	○	○	○	○
79	○	○	○	○	○
80	○	○	○	○	○
81	○	○	○	○	○
82	○	○	○	○	○
83	○	○	○	○	○
84	○	○	○	○	○

	a	b	c	d	e
85	○	○	○	○	○
86	○	○	○	○	○
87	○	○	○	○	○
88	○	○	○	○	○
89	○	○	○	○	○
90	○	○	○	○	○
91	○	○	○	○	○
92	○	○	○	○	○
93	○	○	○	○	○
94	○	○	○	○	○
95	○	○	○	○	○
96	○	○	○	○	○

	a	b	c	d	e
97	○	○	○	○	○
98	○	○	○	○	○
99	○	○	○	○	○
100	○	○	○	○	○



Ministerul Educației  
 Universitatea de Medicină și Farmacie din Craiova  
 Facultatea de Medicină  
 Concurs de admitere Biologie - Fizică  
 Sesiunea iulie 2022

Indicații de completare:

1. Pentru completarea grilei folosiți numai pix cu pastă neagră.
2. Pentru fiecare întrebare vi se oferă 5 opțiuni de răspuns (a, b, c, d și e). Marcarea răspunsului corect se face prin umplerea completă a cerculețului. Orice alt mod de marcare va determina anularea răspunsului la întrebarea respectivă.
- Exemple de marcare: corectă: ○ ● ○ ● ○  
 Incorectă: ○ ✗ ○ ● ○      incorectă: ○ ✗ ○ ✗ ○
3. Nu marcați cerculețele din cele 2 rânduri care specifică tipul de teză.
4. În caz de marcare greșită puteți solicita responsabilului de sală un nou formular grilă de același tip o singură dată.

Numele:.....

Inițiala tatălui:.....

Prenumele:.....

Număr legitimație:.....

Program studii:.....

Candidat,

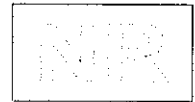
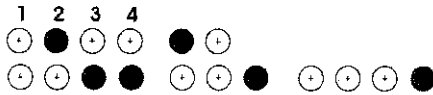
(semnătura)

Responsabil sală,

(semnătura)

Deoarece citirea formularului grilă și transformarea punctajului în note se face automat, cu ajutorul calculatorului, trebuie să respectați cu strictețe aceste precizări.

Tip teză: **2**



	a	b	c	d	e
1	○	●	○	○	○
2	●	○	○	○	○
3	○	○	○	●	○
4	○	○	○	●	○
5	●	○	○	○	○
6	○	○	○	○	●
7	●	○	○	○	○
8	○	○	○	●	○
9	○	○	○	○	○
10	○	○	○	○	○
11	○	○	○	○	○
12	○	○	○	○	○

	a	b	c	d	e
13	○	●	○	○	○
14	○	○	○	○	○
15	○	○	○	○	○
16	○	○	○	○	○
17	○	○	○	○	○
18	○	○	○	○	○
19	○	○	○	○	○
20	○	○	○	○	○
21	○	○	○	○	○
22	○	○	○	○	○
23	○	○	○	○	○
24	○	○	○	○	○

	a	b	c	d	e
25	○	○	○	○	○
26	○	○	○	○	○
27	○	○	○	○	○
28	○	○	○	○	○
29	○	○	○	○	○
30	○	○	○	○	○
31	○	○	○	○	○
32	○	○	○	○	○
33	○	○	○	○	○
34	○	○	○	○	○
35	○	○	○	○	○
36	○	○	○	○	○

	a	b	c	d	e
37	○	○	○	○	○
38	○	○	○	○	○
39	○	○	○	○	○
40	○	○	○	○	○
41	○	○	○	○	○
42	○	○	○	○	○
43	○	○	○	○	○
44	○	○	○	○	○
45	○	○	○	○	○
46	○	○	○	○	○
47	○	○	○	○	○
48	○	○	○	○	○

	a	b	c	d	e
49	○	○	○	○	○
50	○	○	○	○	○
51	○	○	○	○	○
52	○	○	○	○	○
53	○	○	○	○	○
54	○	○	○	○	○
55	○	○	○	○	○
56	○	○	○	○	○
57	○	○	○	○	○
58	○	○	○	○	○
59	○	○	○	○	○
60	○	○	○	○	○

	a	b	c	d	e
61	○	○	○	○	○
62	○	○	○	○	○
63	○	○	○	○	○
64	○	○	○	○	○
65	○	○	○	○	○
66	○	○	○	○	○
67	○	○	○	○	○
68	○	○	○	○	○
69	○	○	○	○	○
70	○	○	○	○	○
71	○	○	○	○	○
72	○	○	○	○	○

	a	b	c	d	e
73	○	○	○	○	○
74	○	○	○	○	○
75	○	○	○	○	○
76	○	○	○	○	○
77	○	○	○	○	○
78	○	○	○	○	○
79	○	○	○	○	○
80	○	○	○	○	○
81	○	○	○	○	○
82	○	○	○	○	○
83	○	○	○	○	○
84	○	○	○	○	○

	a	b	c	d	e
85	○	○	○	○	○
86	○	○	○	○	○
87	○	○	○	○	○
88	○	○	○	○	○
89	○	○	○	○	○
90	○	○	○	○	○
91	○	○	○	○	○
92	○	○	○	○	○
93	○	○	○	○	○
94	○	○	○	○	○
95	○	○	○	○	○
96	○	○	○	○	○

	a	b	c	d	e
97	○	○	○	○	○
98	○	○	○	○	○
99	○	○	○	○	○
100	○	○	○	○	○



Ministerul Educației  
 Universitatea de Medicină și Farmacie din Craiova  
 Facultatea de Medicină  
 Concurs de admitere Biologie - Fizică  
 Sesiunea iulie 2022

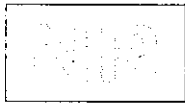
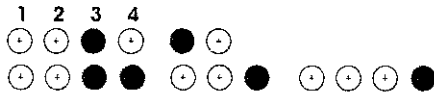
Numele:.....  
 Inițiala tatălui:.....  
 Prenumele:.....  
 .....  
 Număr legitimație:.....  
 Program studii:.....  
 Candidat,                      Responsabil sală,  
 .....                              .....  
 (semnătura)                      (semnătura)

Indicații de completare:

1. Pentru completarea grilei folosiți numai pix cu pastă neagră.
2. Pentru fiecare întrebare vi se oferă 5 opțiuni de răspuns (a, b, c, d și e). Marcarea răspunsului corect se face prin umplerea completă a cerculețului. Orice alt mod de marcarea va determina anularea răspunsului la întrebarea respectivă.
- Exemple de marcarea: corectă: ○ ● ◐ ◑ ○  
 Incorectă: ○ ✗ ○ ● ◐                      incorectă: ○ ✗ ○ ✗ ○
3. Nu marcați cerculețele din cele 2 rânduri care specifică tipul de teză.
4. În caz de marcarea greșită puteți solicita responsabilului de sală un nou formular grilă de același tip o singură dată.

Deoarece citirea formularului grilă și transformarea punctajului în note se face automat, cu ajutorul calculatorului, trebuie să respectați cu strictețe aceste precizări.

Tip teză: **3**



<p>1 ○ ● ○ ○ ○ ○          2 ○ ○ ○ ○ ○ ○          3 ○ ○ ○ ○ ○ ○          4 ○ ○ ○ ○ ○ ○          5 ○ ○ ○ ○ ○ ○          6 ○ ○ ○ ○ ○ ○          7 ○ ○ ○ ○ ○ ○          8 ○ ○ ○ ○ ○ ○          9 ○ ○ ○ ○ ○ ○          10 ○ ○ ○ ○ ○ ○          11 ○ ○ ○ ○ ○ ○          12 ○ ○ ○ ○ ○ ○</p>	<p>13 ○ ○ ○ ○ ○ ○          14 ○ ○ ○ ○ ○ ○          15 ○ ○ ○ ○ ○ ○          16 ○ ○ ○ ○ ○ ○          17 ○ ○ ○ ○ ○ ○          18 ○ ○ ○ ○ ○ ○          19 ○ ○ ○ ○ ○ ○          20 ○ ○ ○ ○ ○ ○          21 ○ ○ ○ ○ ○ ○          22 ○ ○ ○ ○ ○ ○          23 ○ ○ ○ ○ ○ ○          24 ○ ○ ○ ○ ○ ○</p>	<p>25 ○ ○ ○ ○ ○ ○          26 ○ ○ ○ ○ ○ ○          27 ○ ○ ○ ○ ○ ○          28 ○ ○ ○ ○ ○ ○          29 ○ ○ ○ ○ ○ ○          30 ○ ○ ○ ○ ○ ○          31 ○ ○ ○ ○ ○ ○          32 ○ ○ ○ ○ ○ ○          33 ○ ○ ○ ○ ○ ○          34 ○ ○ ○ ○ ○ ○          35 ○ ○ ○ ○ ○ ○          36 ○ ○ ○ ○ ○ ○</p>	<p>37 ○ ○ ○ ○ ○ ○          38 ○ ○ ○ ○ ○ ○          39 ○ ○ ○ ○ ○ ○          40 ○ ○ ○ ○ ○ ○          41 ○ ○ ○ ○ ○ ○          42 ○ ○ ○ ○ ○ ○          43 ○ ○ ○ ○ ○ ○          44 ○ ○ ○ ○ ○ ○          45 ○ ○ ○ ○ ○ ○          46 ○ ○ ○ ○ ○ ○          47 ○ ○ ○ ○ ○ ○          48 ○ ○ ○ ○ ○ ○</p>	<p>49 ○ ○ ○ ○ ○ ○          50 ○ ○ ○ ○ ○ ○          51 ○ ○ ○ ○ ○ ○          52 ○ ○ ○ ○ ○ ○          53 ○ ○ ○ ○ ○ ○          54 ○ ○ ○ ○ ○ ○          55 ○ ○ ○ ○ ○ ○          56 ○ ○ ○ ○ ○ ○          57 ○ ○ ○ ○ ○ ○          58 ○ ○ ○ ○ ○ ○          59 ○ ○ ○ ○ ○ ○          60 ○ ○ ○ ○ ○ ○</p>
<p>61 ○ ○ ○ ○ ○ ○          62 ○ ○ ○ ○ ○ ○          63 ○ ○ ○ ○ ○ ○          64 ○ ○ ○ ○ ○ ○          65 ○ ○ ○ ○ ○ ○          66 ○ ○ ○ ○ ○ ○          67 ○ ○ ○ ○ ○ ○          68 ○ ○ ○ ○ ○ ○          69 ○ ○ ○ ○ ○ ○          70 ○ ○ ○ ○ ○ ○          71 ○ ○ ○ ○ ○ ○          72 ○ ○ ○ ○ ○ ○</p>	<p>73 ○ ○ ○ ○ ○ ○          74 ○ ○ ○ ○ ○ ○          75 ○ ○ ○ ○ ○ ○          76 ○ ○ ○ ○ ○ ○          77 ○ ○ ○ ○ ○ ○          78 ○ ○ ○ ○ ○ ○          79 ○ ○ ○ ○ ○ ○          80 ○ ○ ○ ○ ○ ○          81 ○ ○ ○ ○ ○ ○          82 ○ ○ ○ ○ ○ ○          83 ○ ○ ○ ○ ○ ○          84 ○ ○ ○ ○ ○ ○</p>	<p>85 ○ ○ ○ ○ ○ ○          86 ○ ○ ○ ○ ○ ○          87 ○ ○ ○ ○ ○ ○          88 ○ ○ ○ ○ ○ ○          89 ○ ○ ○ ○ ○ ○          90 ○ ○ ○ ○ ○ ○          91 ○ ○ ○ ○ ○ ○          92 ○ ○ ○ ○ ○ ○          93 ○ ○ ○ ○ ○ ○          94 ○ ○ ○ ○ ○ ○          95 ○ ○ ○ ○ ○ ○          96 ○ ○ ○ ○ ○ ○</p>	<p>97 ○ ○ ○ ○ ○ ○          98 ○ ○ ○ ○ ○ ○          99 ○ ○ ○ ○ ○ ○          100 ○ ○ ○ ○ ○ ○</p>	



Ministerul Educației  
Universitatea de Medicină și Farmacie din Craiova  
Facultatea de Medicină  
Concurs de admitere Biologie - Fizică  
Sesiunea iulie 2022

Numele:.....

Inițiala tatălui:.....

Prenumele:.....

Număr legitimație:.....

Program studii:.....

Candidat,

Responsabil sală,

(semnătura)

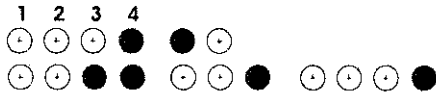
(semnătura)

Indicații de completare:

1. Pentru completarea grilei folosiți numai pix cu pastă neagră.
  2. Pentru fiecare întrebare vi se oferă 5 opțiuni de răspuns (a, b, c, d și e). Marcarea răspunsului corect se face prin umplerea completă a cerculețului. Orice alt mod de marcarea va determina anularea răspunsului la întrebarea respectivă.
- Exemple de marcarea: corectă: ○ ● ○ ● ○  
Incorectă: ○ ✗ ○ ● ○      incorectă: ○ ✗ ○ ↗ ○
3. Nu marcați cerculețele din cele 2 rânduri care specifică tipul de teză.
  4. În caz de marcarea greșită puteți solicita responsabilului de sală un nou formular grilă de același tip o singură dată.

Deoarece citirea formularului grilă și transformarea punctajului în note se face automat, cu ajutorul calculatorului, trebuie să respectați cu strictețe aceste precizări.

Tip teză: **4**



	a	b	c	d	e
1	○	○	○	○	●
2	○	○	●	○	○
3	○	○	○	●	○
4	●	○	○	○	○
5	○	○	●	○	○
6	○	○	○	●	○
7	●	○	○	○	○
8	●	○	○	○	○
9	○	○	○	●	○
10	○	●	○	○	○
11	○	○	○	○	○
12	○	○	○	○	○
13	○	○	○	○	○
14	○	○	○	○	○
15	○	○	○	○	○
16	○	○	○	○	○
17	○	○	○	○	○
18	○	○	○	○	○
19	○	○	○	○	○
20	○	○	○	○	○
21	○	○	○	○	○
22	○	○	○	○	○
23	○	○	○	○	○
24	○	○	○	○	○
25	○	○	○	○	○
26	○	○	○	○	○
27	○	○	○	○	○
28	○	○	○	○	○
29	○	○	○	○	○
30	○	○	○	○	○
31	○	○	○	○	○
32	○	○	○	○	○
33	○	○	○	○	○
34	○	○	○	○	○
35	○	○	○	○	○
36	○	○	○	○	○
37	○	○	○	○	○
38	○	○	○	○	○
39	○	○	○	○	○
40	○	○	○	○	○
41	○	○	○	○	○
42	○	○	○	○	○
43	○	○	○	○	○
44	○	○	○	○	○
45	○	○	○	○	○
46	○	○	○	○	○
47	○	○	○	○	○
48	○	○	○	○	○
49	○	○	○	○	○
50	○	○	○	○	○
51	○	○	○	○	○
52	○	○	○	○	○
53	○	○	○	○	○
54	○	○	○	○	○
55	○	○	○	○	○
56	○	○	○	○	○
57	○	○	○	○	○
58	○	○	○	○	○
59	○	○	○	○	○
60	○	○	○	○	○
61	○	○	○	○	○
62	○	○	○	○	○
63	○	○	○	○	○
64	○	○	○	○	○
65	○	○	○	○	○
66	○	○	○	○	○
67	○	○	○	○	○
68	○	○	○	○	○
69	○	○	○	○	○
70	○	○	○	○	○
71	○	○	○	○	○
72	○	○	○	○	○
73	○	○	○	○	○
74	○	○	○	○	○
75	○	○	○	○	○
76	○	○	○	○	○
77	○	○	○	○	○
78	○	○	○	○	○
79	○	○	○	○	○
80	○	○	○	○	○
81	○	○	○	○	○
82	○	○	○	○	○
83	○	○	○	○	○
84	○	○	○	○	○
85	○	○	○	○	○
86	○	○	○	○	○
87	○	○	○	○	○
88	○	○	○	○	○
89	○	○	○	○	○
90	○	○	○	○	○
91	○	○	○	○	○
92	○	○	○	○	○
93	○	○	○	○	○
94	○	○	○	○	○
95	○	○	○	○	○
96	○	○	○	○	○
97	○	○	○	○	○
98	○	○	○	○	○
99	○	○	○	○	○
100	○	○	○	○	○